








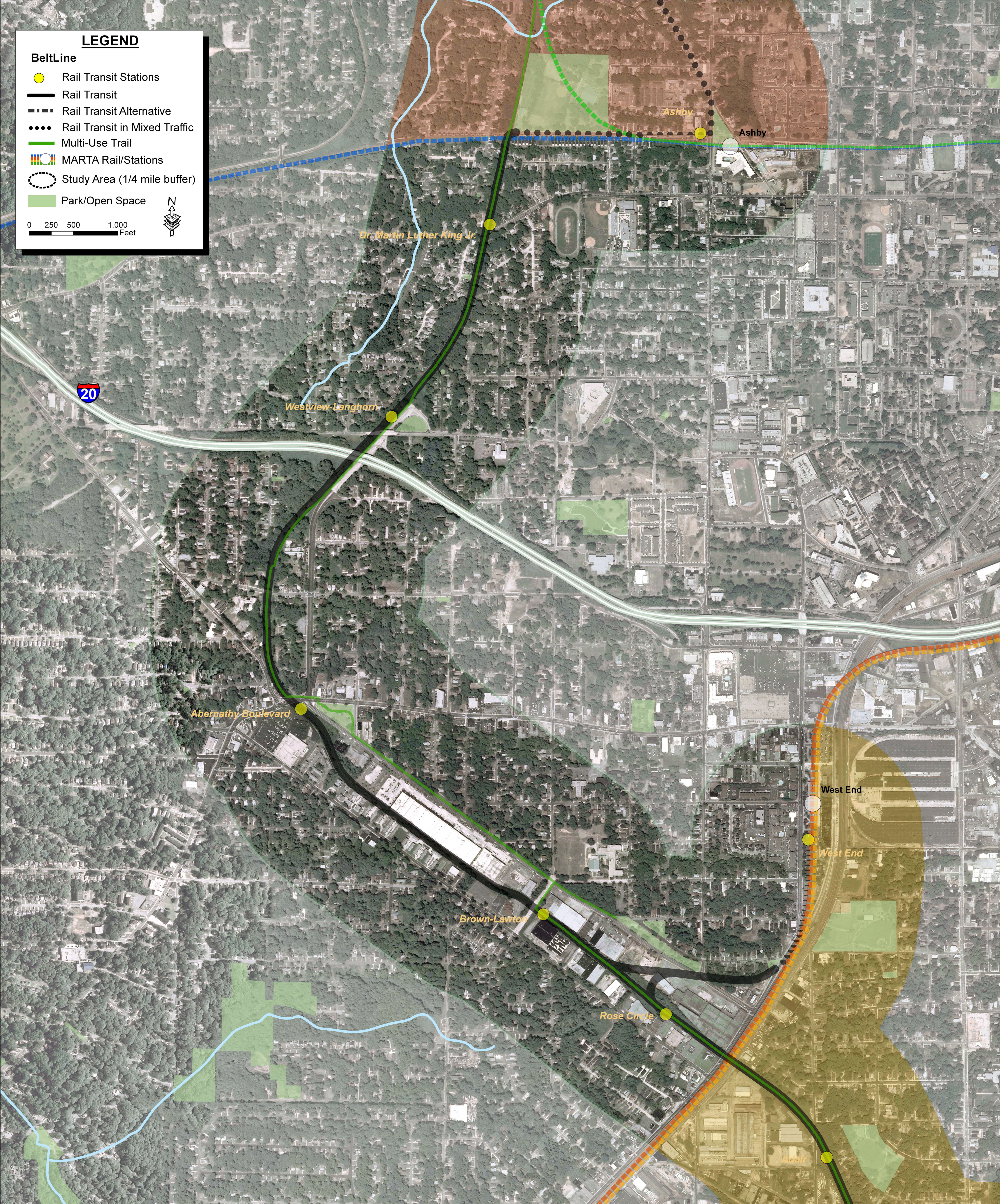


**LEGEND**

-  Rail Transit Stations
-  Rail Transit
-  Rail Transit Alternative
-  Rail Transit in Mixed Traffic
-  Multi-Use Trail
-  MARTA Rail/Stations
-  Study Area (1/4 mile buffer)
-  Park/Open Space

0 250 500 1,000 Feet

N

**BeltLine Proposed Alignment - Southwest Zone**  
**RAIL TRANSIT AND MULTI-USE TRAIL**